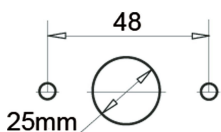
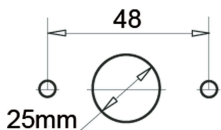


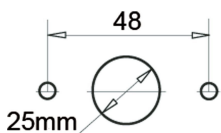
Emergency switch



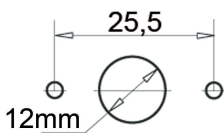
Cod.	Description	Volt	Amp	Applicazione
TR108	EMERGENCY STOP SWITCH - SD150A-30 INT. 4 OPTIONS	24	125	OM



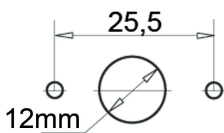
Cod.	Description	Volt	Amp	Applicazione
TR109	EMERGENCY STOP SWITCH - SD150A-32 INT. 6 OPTIONS	24	125	OM



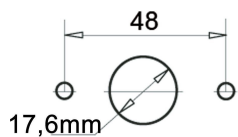
Cod.	Description	Volt	Amp	Applicazione
TR110	EMERGENCY STOP SWITCH - SD150A-40 CO.	24	125	OM



Cod.	Description	Volt	Amp
TR124	PUSH BUTTON SWITCH - BDS200	96	200



Cod.	Description	Volt	Amp
TR125	PUSH BUTTON SWITCH - BDS300S	96	300

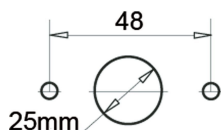


Cod.	Description	Volt	Amp
BK10919	PUSH BUTTON SWITCH - PA250	96	250

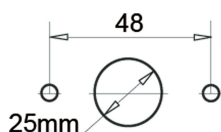
Emergency switch



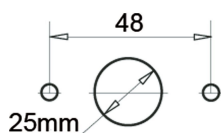
Cod.	Description	Volt	Amp
TR123	PUSH BUTTON SWITCH - BDS150	48	150



Cod.	Description	Volt	Amp
TR126	PUSH BUTTON SWITCH - SD250	24	250



Cod.	Description	Volt	Amp
TR127	PUSH BUTTON SWITCH - ED252	96	250



Cod.	Description	Volt	Amp
TR156	PUSH BUTTON SWITCH - ED250L-1	48	250



Cod.	Description	Volt
TA64526	PUSH BUTTON SWITCH WITH ROTATION RELEASE 2NC - IP66 IP67 IP69K	125V dc - 240V ca